



# Green Music Center

# GMC Presentations and Approvals

<b>April 24, 2000</b>	<b>Campus Planning Committee recommends the Campus Master Plan</b>
<b>May 9-10, 2000</b>	<b>BOT approves SSU Campus Master Plan Revision &amp; Schematic Plans for GMC</b>
<b>October 12, 2001</b>	<b>Report to CRC – Green Music Center</b> <i>Larry Furukawa-Schlereth</i>
<b>October 24, 2001</b>	<b>Report to the Senate on GMC Finances</b> <i>Larry Furukawa-Schlereth</i>
<b>November 8, 2001</b>	<b>Follow-Up to the October 24, 2001 Senate Report</b> <i>Jim Meyer</i>
<b>December 13, 2001</b>	<b>Report To the Senate – GMC Program</b> <i>Bernie Goldstein, Jeff Langley, Floyd Ross</i>

# GMC Presentations and Approvals

<b>November 20, 2003</b>	<b>Campus Planning Committee recommends the Music Faculty Office Building component of the Green Music Center</b>
<b>December 18, 2003</b>	<b>Report to the Senate – GMC Finances</b> <i>Larry Furukawa-Schlereth</i>
<b>February 20, 2004</b>	<b>Report to CRC – GMC Update</b> <i>Bruce Walker, Larry Furukawa-Schlereth</i>
<b>March 4, 2004</b>	<b>Report to the Senate – GMC Program</b> <i>Eduardo Ochoa, Jeff Langley, Floyd Ross</i>
<b>September 2, 2004</b>	<b>Report to the Senate – Green Music Center</b> <i>Eduardo Ochoa, Larry Furukawa-Schlereth</i>
<b>October 11, 2004</b>	<b>Report to CRC</b> <i>Larry Furukawa-Schlereth</i>

# GMC Presentations and Approvals

<b>December 16, 2004</b>	<b>Report to the PBAC – GMC as Board of Trustees Item</b> <i>Larry Furukawa-Schlereth</i>
<b>December 17, 2004</b>	<b>Report to CRC – GMC schematic design</b> <i>Bruce Walker</i>
<b>December 21, 2004</b>	<b>SSU Academic Foundation Board approves the interim financing plan for the GMC</b>
<b>Jan 25-26 , 2005</b>	<b>BOT approves revisions to SSU Campus Master Plan &amp; Schematic Plans for GMC</b>
<b>Jan 25-26 , 2005</b>	<b>BOT approves Interim Financing Plan of the SSUAF for the GMC</b>
<b>March 11, 2005</b>	<b>Sonoma State Enterprise Board approves the Hospitality Center Component of GMC</b>

# GMC Presentations and Approvals

<b>July 19-20, 2005</b>	<b>BOT places GMC on Capital Outlay 05/06 Priority List</b>
<b>July 19-20, 2005</b>	<b>BOT approves issuance of SRBs for Hospitality Center in GMC</b>
<b>October 13, 2005</b>	<b>Report to the PBAC – Green Music Center Finances</b> <i>Larry Furukawa-Schlereth</i>
<b>January 27, 2006</b>	<b>SSU Academic Foundation approves changes to the donor pledge agreement related to the interim financing plan for the GMC</b>
<b>February 23, 2006</b>	<b>Report to the PBAC: Green Music Center</b> <i>Eduardo Ochoa, Larry Furukawa-Schlereth</i>
<b>February 23, 2006</b>	<b>Special Report to the Senate: GMC</b> <i>Eduardo Ochoa, Larry Furukawa-Schlereth</i>

# Components of the GMC

- **Concert Hall**
  - **1,400 Seats**
- **Music Faculty Office Building**
  - **2 General Purpose Classrooms**
  - **Recital Hall and Practice Rooms**
  - **Faculty Offices**
  - **Music & Theatre Arts Department Offices**
- **Executive Conference and Dining Facility**
  - **Dining Room and Bar: 150 Guests**
  - **Private Dining Room: 150 Guests for Dinner/ 200 Guests for a Meeting**
  - **Private Garden Area: 300 Guests**

# Construction

<b>Pre-Project Expenses</b>	<b>\$</b>	<b>7,000,000</b>
<b>Construction</b>		
<b>Contract: January 2006</b>	<b>\$</b>	<b>7,600,000</b>
<b>Contract: September 2006</b>	<b>\$</b>	<b>40,460,291</b>
<b>Contingency</b>	<b>\$</b>	<b>1,600,000</b>
<b>Design Fees</b>	<b>\$</b>	<b>3,141,725</b>
<b>Group II Equipment, (Music Faculty Office Building)</b>	<b>\$</b>	<b>1,543,000</b>
<b>Financing Costs</b>	<b>\$</b>	<b>3,686,360</b>
<hr/> <b>Total</b>	<b>\$</b>	<b>65,031,376</b>

# Construction Funding

<b>Cash &amp; Pledges Received from Donors</b>	<b>\$ 40,901,376</b>
	<b>63%</b>
<b>CSU Capital Outlay Program</b>	<b>\$ 19,390,000</b>
	<b>30%</b>
<b>SSU Conferences, Events and Catering via SRB</b>	<b>\$ 4,740,000</b>
	<b>7%</b>
<hr/> <b>Total</b>	<hr/> <b>\$ 65,031,376</b>

A faint, light green calligraphic graphic is centered on the page. It consists of several fluid, overlapping strokes that form an abstract shape, possibly representing a stylized figure or a character. The background is a solid, pale yellow color.

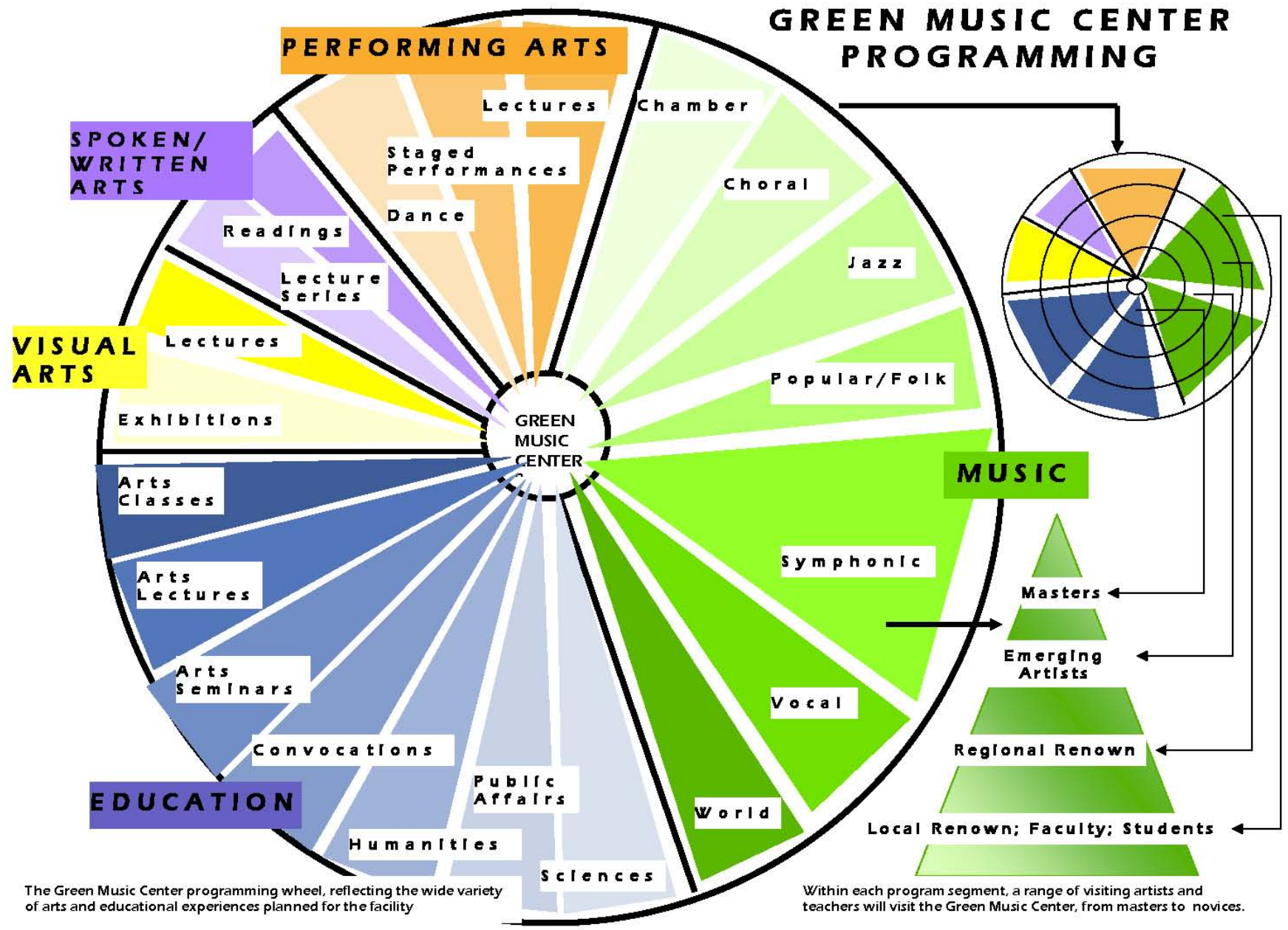
# Operations

# **Academic Uses of the Green Music Center**

The Green Music Center is an academic facility at Sonoma State University; as such it will be used for:

- Instruction;
- Lectures;
- Campus gatherings;
- Artistic performances, including
  - Classical, jazz, and popular music;
  - Theater;
  - Dance

# GREEN MUSIC CENTER PROGRAMMING



The Green Music Center programming wheel, reflecting the wide variety of arts and educational experiences planned for the facility

Within each program segment, a range of visiting artists and teachers will visit the Green Music Center, from masters to novices.

# GMC and Enrollment

- The Green Music Center assists SSU in meeting its enrollment growth plan
  - 2008-09: SSU Reaches Capacity
  - 2008-09: GMC Opens Adding Capacity for at least **797** FTES:
    - 300 FTES [2 classrooms]
    - 124 FTES [20% of capacity in Recital Hall]
    - 373 FTES [One 4-unit class in Concert Hall]

# Technical, Instructional and Performance-Related (TIP) Operating Expenses

Position	Salary	Benefits	Total
<b>Director: Operations and Logistics</b> <i>(Admin I)</i>	\$ 100,000	\$ 36,000	\$ 136,000
<b>Administrative Coordinator</b> <i>(ASCII)</i>	\$ 40,000	\$ 14,440	\$ 54,440
<b>Sound Engineer</b> <i>(PATIII)</i>	\$ 51,000	\$ 18,360	\$ 69,360
<b>Lead Performing Arts Technician</b> <i>(PATIII)</i>	\$ 51,000	\$ 18,360	\$ 69,360
<b>Performing Arts Technician</b> <i>(PATII)</i> <i>(4FTE)</i>	\$ 192,000	\$ 69,120	\$ 261,120
	\$ 434,000	\$ 136,280	\$ 590,280
<b>General Operating Expense</b>			\$ 30,000
<b>TOTAL:</b>			\$ 620,280

# Source of TIP Operating Expenses

- **SSU FTES Growth by Fall 2008 (CSU Projections)**

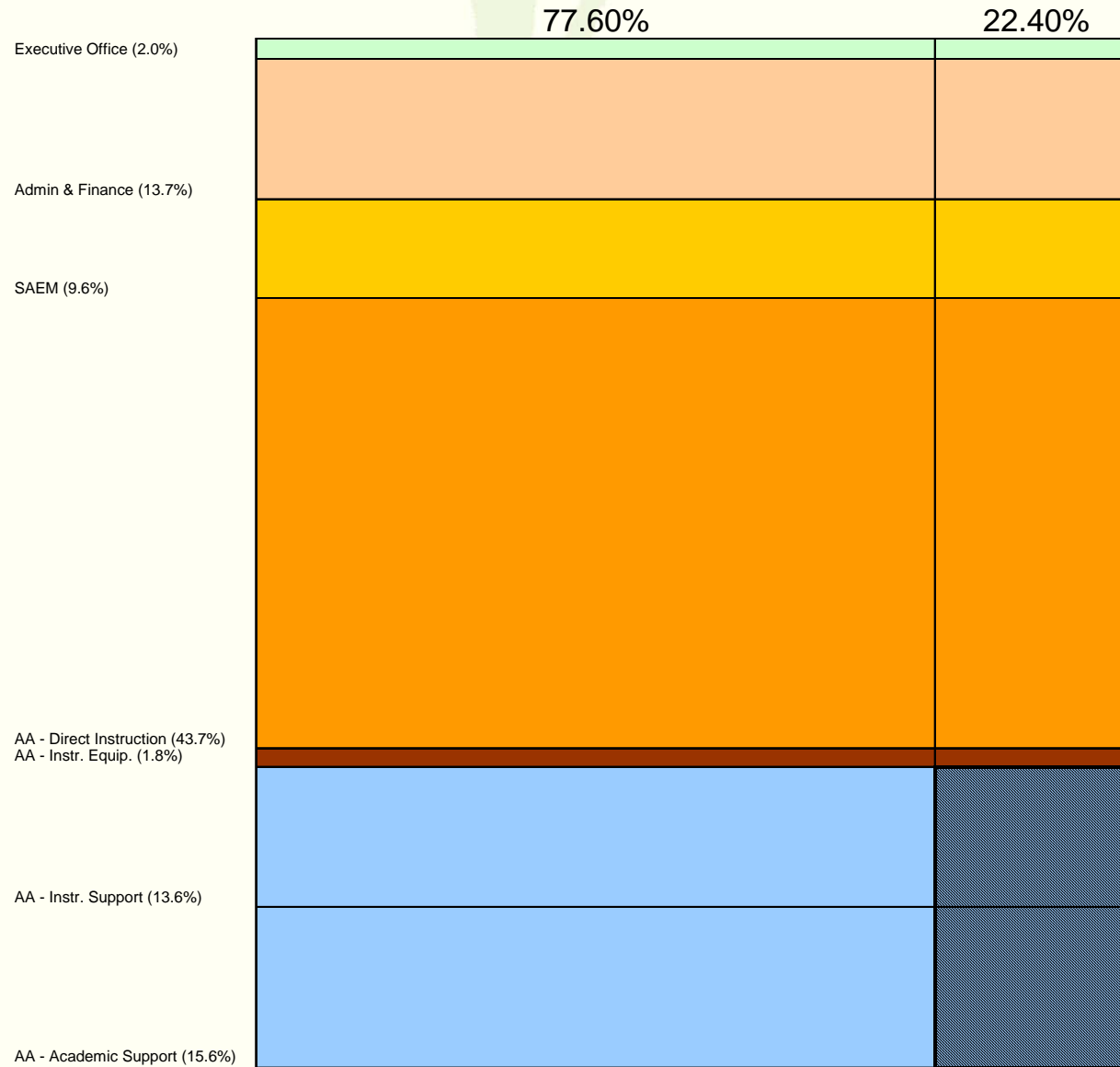
AY	Total FTES	FTES increase
2006-07	7,215	311
2007-08	7,766	551
2008-09	8,166	400
TOTAL	--	1,262

- **New Academic and Instructional (A&I) Support Funding:**

$$1,262 \times \$7,500 \times 29.22\% = \$2,765,673$$

- **TIP O.E. as share of new A&I Funding: 22.4 %**

# TIP OE Budget as Share of Marginal Cost Funding



# Plant Operations Expense

Position	Salary	Benefits	Total
<b>Facilities Manager</b>	\$ 85,000	\$ 30,600	\$ 115,600
<b>Administrative Coordinator</b>	\$ 40,000	\$ 14,400	\$ 54,400
<b>Custodians (2.15 FTE)</b>	\$ 53,044	\$ 19,095	\$ 72,139
<b>Landscaping* (.20 FTE)</b> <i>Excluding Lawn and Parking</i>	\$ 6,422	N/A	\$ 6,422
<b>Trades (3 FTE)</b>	\$ 152,676	\$ 54,963	\$ 207,639
<b>Utilities</b>	N/A	N/A	\$ 252,000
<b>General Operating Expense</b>	N/A	N/A	\$ 76,300
<b>TOTAL:</b>			\$ 784,500

<b>Funding Sources:</b>			
<b>CSU Dollars for New Space</b> <i>105,000 x \$6.40</i>			\$ 672,000
<b>Facilities Services Fee, Known Program</b>			\$ 112,500
<b>TOTAL:</b>			\$ 784,500

# Parking Operations Expense

<b>Position</b>	<b>Salary</b>	<b>Benefits</b>	<b>Total</b>
<b>Parking Hourly Staff</b>	<b>\$ 46,992</b>	<b>\$ N/A</b>	<b>\$ 46,992</b>
<b>Landscape Staff</b> <i>3 FTE x 50%</i>	<b>\$ 48,168</b>	<b>\$ 17,340</b>	<b>\$ 65,508</b>
<b>TOTAL:</b>			<b>\$ 112,500</b>

## **Funding Source:**

**Parking Services Fee – Known Program** **\$ 112,500**

*(45,000 Patrons)*

# Administration & Finance Expenses

<b>Position</b>	<b>Salary</b>	<b>Benefits</b>	<b>Total</b>
<b>Financial Services (1 FTE)</b>	<b>\$ 100,000</b>	<b>\$ 36,000</b>	<b>\$ 136,000</b>
<b>Contract Management (1 FTE)</b>	<b>\$ 60,000</b>	<b>\$ 21,600</b>	<b>\$ 81,600</b>
<b>Information Technology (1 FTE)</b>	<b>\$ 60,000</b>	<b>\$ 21,600</b>	<b>\$ 81,600</b>
<b>TOTAL:</b>			<b>\$ 299,200</b>

## **Funding Source:**

**Administration & Finance Dollars from Growth** **\$ 306,900**

*300 FTES x \$7,500 x 13.64% = \$306,900*

# Debt Service Expense

<b>Annual Debt Service – Concert Hall</b>	<b>\$ 150,000</b>
<b>Annual Debt Service – Hospitality Center</b>	<b>\$ 150,000</b>
<b>TOTAL:</b>	<b>\$ 300,000</b>

<b>Funding Sources:</b>	
<b>Annual Lease Payment – Center for Performing Arts</b>	
<i>Generated from Concert Hall Rentals</i>	<b>\$ 150,000</b>
<b>Annual Lease Payment – Conferences and Events</b>	
<i>Generated from Conferences and Events Operations in the Hospitality Center</i>	<b>\$ 150,000</b>
<b>TOTAL:</b>	<b>\$ 300,000</b>

# Self Supporting Activities at the Green Music Center

- **The School of Extended Education will absorb any operating profits or losses associated with the Greenfarm program.**
- **The Center for Performing Arts Instructionally Related Activities Program will fund the cost of its presenting season via tickets sold to CPA/IRA events and resources from the Instructionally Related Activities Student Fee.**
- **Associated Students Productions will fully fund the cost of its presenting season via tickets sold to ASP events and resources from the Associated Students budget.**

## Self Supporting Activities at the Green Music Center (cont.)

- **Summer Conferences, Events and Catering will fund the costs of its operations related to the hospitality and executive conference center.**
- **The Santa Rosa Symphony fully fund the cost of its program and will reimburse the University for any services the campus provides.**