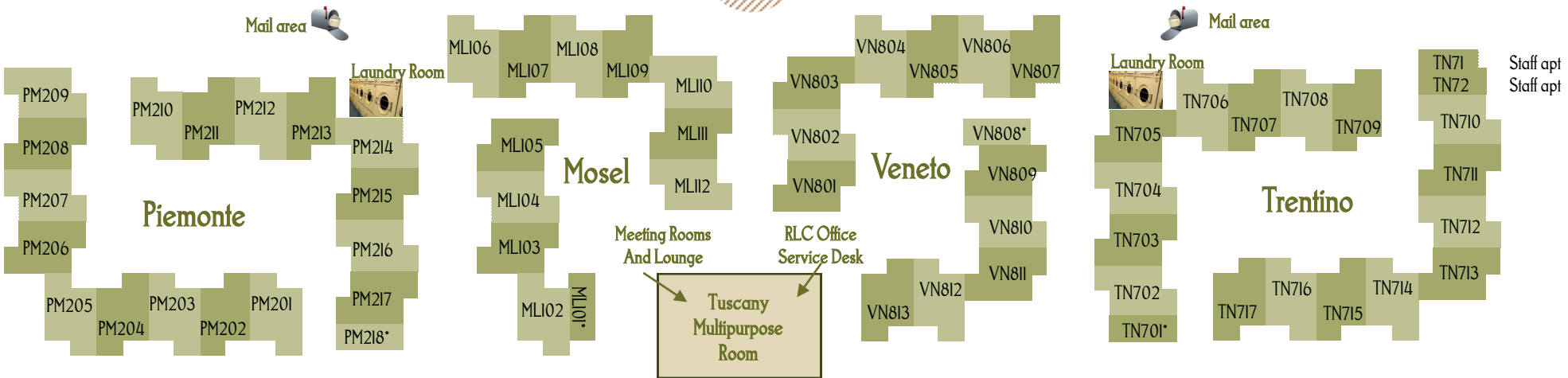
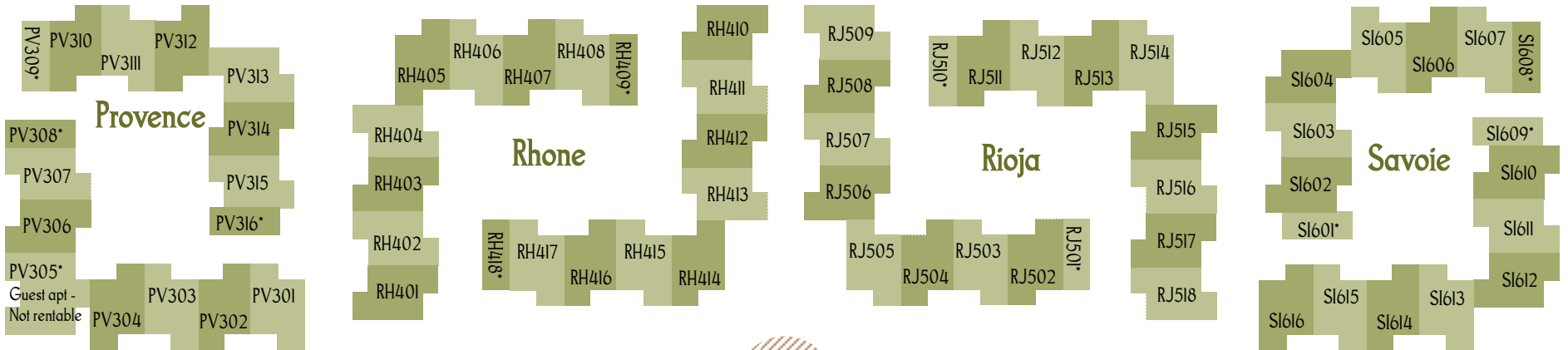


TUSCANY VILLAGE

Beaujolais
Community
Building

- Townhouse: 4 bedroom/4 bath unit
2 double occupancy bedrooms
2 single occupancy bedrooms
- * CSA units: apartments with * are for live-in student staff

See backside for floor plan and amenities



BUILDING NAME

- Mosel (Mo-ZELL):** German river valley wine region
- Piemonte (Pee-eh-MAWN-tay) -** Northwestern Italian wine region
- Provence (pro-vahnS) :** Southern France wine region
- Rhone (Rone):** French wine region

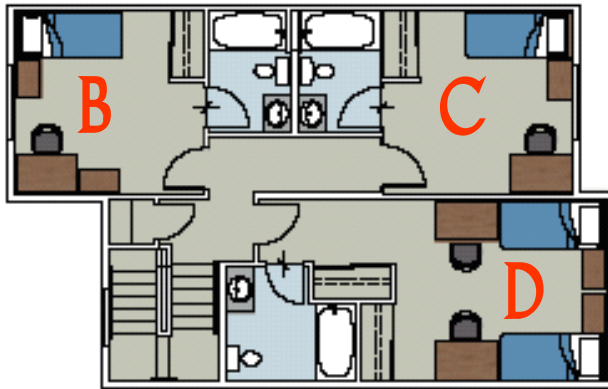
TUSCANY

BUILDING NAME

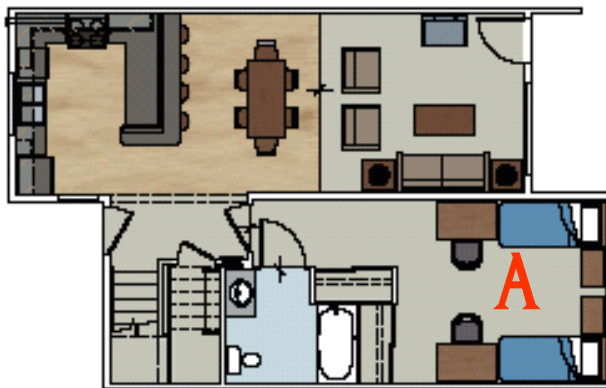
- Rioja (Ree-OH-hah):** Northern Spain wine region
- Savoie (sa-VWAH):** Eastern France wine region
- Trentino (Tren-TEE-noe):** Northern Italy mountainous wine region
- Veneto (VAY-nah-toe):** Northeastern Italy wine region

TUSCANY VILLAGE

Floor Plan and Amenities



LEVEL TWO



LEVEL ONE

- Approximately 1500 square feet, two story townhouses
- One floor plan: 1 bedroom downstairs, 3 upstairs
- Bedrooms A and D are double occupancy bedrooms with private bath
- Bedrooms B and C are single occupancy bedrooms with private bath
- Bedroom A is on the first floor

- Modern kitchen with Corian countertops with stainless steel looking appliances.
- Disposal, dishwasher, refrigerator, electric oven/range, and full microwave above range.
- Breakfast bar with bar stools.
- Attractive and stylish furnishings.
- Internet connectivity over line or wireless plus cable television.
- Bed, desk, pedestal mobile drawers/nightstand, stackable drawers, and closet for each resident.
- Laminated wood flooring in kitchen/dining room and carpet in living room and bedroom.
- Multipurpose room with RLC Office, Service Desk, package pick-up, lounge, fire-place, and meeting rooms.
- Nicely landscaped courtyards for gathering with friends or for building events.

