

Sigma Theta Tau International: Lambda Gamma Chapter

Spring Newsletter

Message from the President

Special points of interest:

- Message from the President
- Evidence Based Practice: Symptom Management

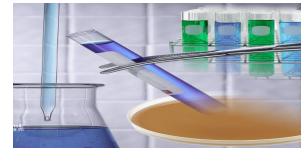
Thank you all for the opportunity to participate in the 38th Biennial STTI convention. It was an exhilarating and sometimes an exhausting experience. I received my nursing education and training in Sonoma County, so this experience, with its abundance of different and innovating ideas was enlightening. For instance, the keynote speaker on the first day of the convention was Greta Sherman, advertising, communications guru and now executive of Monster.com, is also currently an advisor to the American Association of Colleges of Nursing. She talked about the BIG debate, the nursing shortage.

In 2012 there will be 1,000,000 RN positions vacant, just in time for the Baby Boomers to be hit retirement age and to start to tax the health care system in record numbers. Why is this happening? Greta Sherman's opinion is nursing is not a competing

profession. PhD nurses, the highest rank of professional nurses make \$55.00 per hour teaching nursing in our colleges and most instructors are not tenured, meaning, no benefits or pension. WOW, nurses can make better money in hospitals, so that is where nurses are going. The bottleneck, these days, is just that; Students are flocking to our nursing schools but the colleges do not have enough teachers to teach all the nursing students.

What is a profession to do? Greta Sherman thinks in order to compete, nursing has got to CHANGE. Nursing can not be all things to all professional positions and still be respected. Nursing can not be the profession that literally wipes people's asses in the hospitals and demands professional wages in our colleges. It is just not done.

Nursing is not attracting MEN.



With all the promoting and advertising, the nursing profession still only has 1% male workers. Why is this? Greta seems to think that the word "nursing" has female connotations and therefore does not attract the male image and without the male worker, nursing can not compete as a profession. Does nursing need another name that describes all our attributes and includes all the potential workers?

I'm afraid if nursing does not do something to solve it's problem, the powers-that-be will step in and do it for us and we will not like the out come. What are your ideas to CHANGE nursing, to be competitive, to attract younger, intelligent and ambitious professionals. Let's talk. Come to our meetings, get involved.

Inside this issue:

- EBP course details 2
- Induction Ceremony Invitation 2
- New Inductees and awards 2-3
- Update on MSN programs at SSU 3-4
- Board Members 4
- Sneak Peak 4

Evidence Based Practice: Symptom Management

SAVE THIS DATE!!!

Lambda Gamma is again co-sponsoring with North Bay Network for Healthcare Education a conference on **EVIDENCE BASED PRACTICE**. Here's the information...

Title: EVIDENCE BASED PRACTICE: Focus on Symptom Management

Date: June 9, 2006

Location:

Sonoma State University
1501 East Cotati Avenue
Rohnert Park, Ca 94928

Time: 8:00am Registration
Jean & Charles Schulz Information Center, Room 1121
(8:30am – 3:30pm Course)
Lunch: On your own!

See following page for course details!



Evidence Based Practice Seminar Details

Course Description: This is the second in a series of courses designed for nurses from all specialties to assist them to understand how Evidenced Based Practice (EBP) is impacting their practice. Using symptom management as a focus, specifically **dyspnea**, we will explore the use of a dynamic model based on ongoing research, and how to access data bases. We will also explore the relationship between EBP and the development of nursing practice policy, as well as the relationship between EBP

and health teaching.

Course Objectives: Upon completion of this course you will be able to:

- a. Discuss the use of a conceptual model to guide the exploration of evidence based practice related to symptom management in a variety of patient populations.
- b. Discuss dyspnea management as an exemplar of evidence based practice.
- c. Use and evaluate major evidence based data bases. Describe ways to use EBP in your workplace for policy development and for health teaching

Course Instructors:

Kathy Beebe RN PhD
Virginia Carrieri-Kohlman RN PhD
Sandra De Bella Bodley RN EdD
Nurse Panelists from Hospitals in Sonoma County

To register for this conference, look for your brochure in the mail SOON!!!!

"The Lambda Gamma Chapter continues the tradition of honoring nurses who demonstrate professional excellence in research, education, nursing practice, leadership and mentoring."

Invitation to the Induction Ceremony

The Lambda Gamma Chapter of Sigma Theta Tau International is pleased to extend an invitation to this year's Induction Ceremony. The student community member candidates are established and new leaders and scholars in nursing who are recog-

nized for their many achievements. The ceremony will be held on Saturday, April 15, 2006, at 11:00 am in the Cooperage at Sonoma State University. The chapter will also be presenting deserving community colleagues with Chapter Recognition

Awards. By acknowledging their contributions, we affirm the energy, spirit, leadership and creativity that our chapter and organization values and supports. Please join us as we celebrate some of nursing's finest!

Inductees and Award recipients

Undergraduate Students:

-Angela Aumell
-Erin Balthazor
-Rangineh Bassir
-Sarah Jayne Berlin
-Sheena Marie Bissit
-Brandy Danielle Boswell
-Emily Kathryn Guess
-Sarah Kennedy

-Sarah Christine Kennedy
-Joseph Cabel Mojares
-Mindy Alison Moro
-Aimee Pratt
-Jennifer L Reynoso
-Karin Rivo
-Taryn Lynn Smart
-Angelique Suarez
-Diana Thomas

Graduate Students:

-Cecily Arenas
-Andrea Baker
-Rose Donnelly
-Wendy Elizabeth Gaus
-Carla A. Glasbrener
-Shabana Haxton
-De Anna Leamon
-Judy Lock
-Marilyn Magoffin
-Barb McCamish



Inductees and Award Recipients cont.

Graduate Students

Cont.:

- Heidi Anne Minkow
- Barb Nuss
- Mary Papsco
- Judith Anne Rolls
- Savoy Magyari Sebaló
- Leah Shute
- Linda Thomas
- Jeanie Webb
- Gloria Weld

Community Members:

- Michael Chamberlain
- Lynn Finley
- Andraya Hall-Miller
- Candace Weinke

Award Recipients:

Excellence in Clinical Practice:

- Fern Cudlip

Excellence in Nursing Leadership:

- Karin Reese

Excellence in Nursing Mentorship:

- Jan Mauro



Update on MSN Programs at SSU

By Sandra DeBella Bodley

Here's a brief update on the MSN program at SSU. In a previous article I presented the new direct entry masters option (DEMSN) that since has been accredited by both the BRN and NLN. The program will have its first graduates this May and admitted its second cohort of students in January. The program time has expended from 15 months to 18 months. This program is designed for individuals with a bachelor's degree in another discipline who take the nursing prerequisite courses of Chemistry, Anatomy and Physiology and microbiology. Applicants are also required to take a CNA course prior to coming into the program. It is a small very intense program only admitting about 15 students every 18 months. But the program is very much in

demand for second career individuals. The DEMSN is a special option leading to the clinical nurse leader within the MSN program at SSU. Another option is the education track which is a collaboration between CSU Chico and SSU with the course work being on line at Chico and the SSU students being mentored locally by SSU faculty. This semester I'm having a lot of fun mentoring four very dedicated education track students. This collaboration supports centers of excellence in education for students in the specialty tracks. SSU will be the center for nursing administration students from other Northern California CSU campuses and Chico will be the center for nursing education. In these days of very tight resources and limited faculty for many programs collaboration is one

way to make programs available to students though out the state

The other masters programs that SSU offer is the well established and well respected FNP program. The program has both a primary clinical focus and now an option in clinic management. This new option is to be funded by a grant that Wendy Smith, Director of the FNP program was awarded from the state. If you haven't checked out the SSU nursing web site lately I'd strongly encourage you to do so at www.sonoma.edu/nursing.

As part of my discussion of the masters program, I'd like to tell you about Lambda Gamma's plans to offer scholarships to nurses in our community who are pursuing their bachelors, masters and doctorates in nursing. The chapter is discussing how we can respond to the nursing shortage in a manner that is

"Lambda Gamma plans to offer scholarships to nurses in our community who are pursuing their bachelors, masters and doctorates in nursing."



Sonoma State University,
Department of Nursing
1801 East Cotati Ave.
Rohnert Park, CA 94928

Phone: (707) 664-2465
Fax: (707) 664-2653
E-mail:



Current Executive Board Officers Lambda Gamma Chapter

President	KC Grigsby
Vice President Membership	Deb Kindy
Vice President of Programs	Patricia Rozenoff
Corresponding Secretary	Sandra Debella Bodley
Recording Secretary	Stefani Vella
Treasurer	Melissa Hall
Graduate Representative	Lisa Burns
Faculty Representative	Deb Kindy
Director at Large	Geralyn Tribble
Research/Grants Chairman	Rae Rhen
Awards Chairman	Kathleen Rockett Zimmerman
Bylaws Chair	Kelly Anderson
Newsletter Editor	Nicole Norris

[http://www.sonoma.edu/nursing/
lambdagamma/newsletters/
fall2005.htm](http://www.sonoma.edu/nursing/lambdagamma/newsletters/fall2005.htm)

Update on MSN Programs at SSU Cont.

consistent with the goals and characteristics of STT. We want to offer a scholarship to a BSN student at SSU who demonstrates outstanding leadership in their junior year (this could be a basic or RN/BSN student). We will ask the individual to join the board in some capacity to further their leadership skills

and gain a fuller knowledge of STT. We will also offer a scholarship to a MSN student in the Administration or Education track who has a career goal of teaching. We presently do have a special fund for FNP scholarships that was left to our chapter by Lynne Lipsher, the first president of Lambda Gamma who died in

2000. We also want to offer a significant scholarship to an individual pursuing their doctoral degree with the goal of teaching. You will hear more about this project because we are starting a fund raising campaign to be able to offer these scholarships on a regular basis.

Sneak peak into the upcoming newsletter

Spring Dinner Seminar Successful!
Information about the seminar and the speaker, Dr. Anita Catlin in the upcoming, fall issue of the newsletter.



Dr. Anita Catlin