

Orchid mantid



Ant lion nest and adult



Robber fly predation



Trap nesting wasp provisions nest



Eggs of syrphid predator on beetle eggs



Syrphid hatchlings



Predatory syrphid fly attacks beetle larvae



Ants are important generalist predators

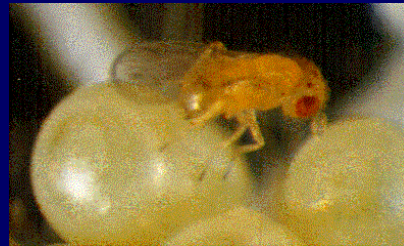


Ground beetle predacious adult, parasitic larva- leaf beetle prey



Egg parasite

<http://www.utoronto.ca/forest/eso/forent/trictext.htm>



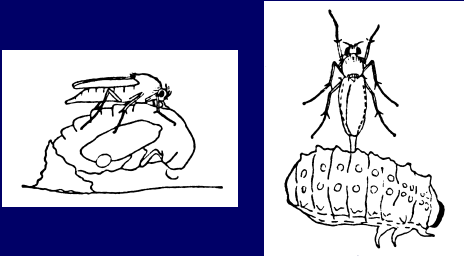
Heliconius egg parasites emerge



Tachinid parasitoid of beetles



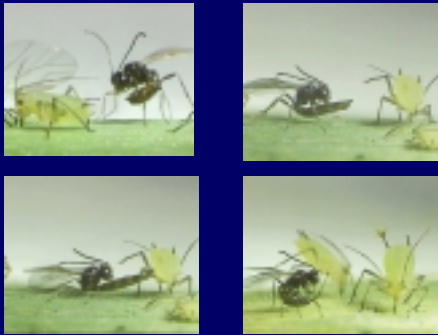
Phorid fly attacking beetles



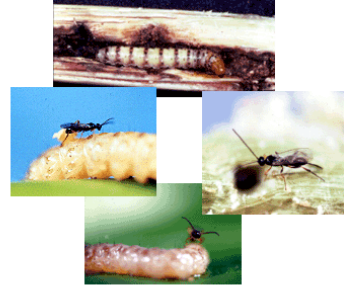
Parasitoid attack on pine weevil



Parasitoid attack on aphids



Stem borer parasitoid



Encapsulation of parasitoid



Top: Encapsulation cluster as viewed from outside of host.
Middle: Heavily encapsulated parasitoid eggs and normal larvae dissected from the same host.
Bottom: Encapsulated parasitoid larvae and normal larva dissected from the same host.

<http://www.inhs.uiuc.edu/cee/wiedenlab/stemborer.html>

Midwestern grasshopper



Leaf mimic katydid



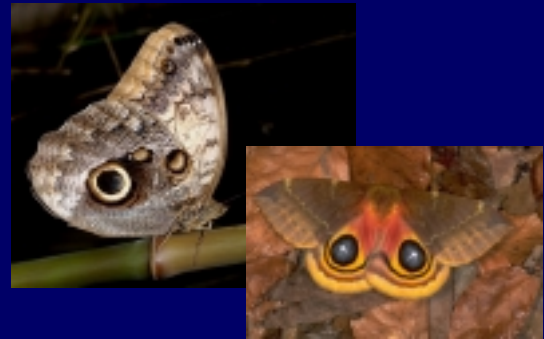
Dead leaf mimic



Scary coloration



Eye spots on wings



Conspicuous coloration in chemically defended beetles



Larval secretion of beetles



Bombardier beetle defense



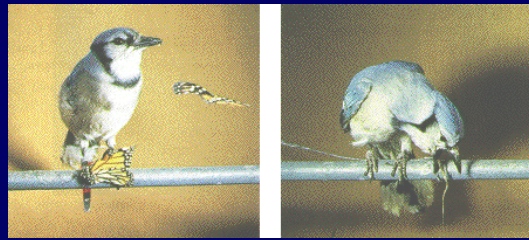
Bombardier beetle in action



Aposematic coloration does not always work



Costs of eating distasteful prey



Mullerian Mimicry

- Two or more unpalatable species resemble each other



Mullerian mimicry in tropical Heliconius



Batesian mimicry

<http://www.bombus.freeserve.co.uk/mimicry.htm>



Beetle mimic



Model wasp



Moth mimic



Fly mimic