

Source

<http://www.nmnh.si.edu/paleo/shale/polen.htm>

---

---

---

---

---

---

---

Burgess shale community

505 million years ago

Many recognizable groups



---

---

---

---

---

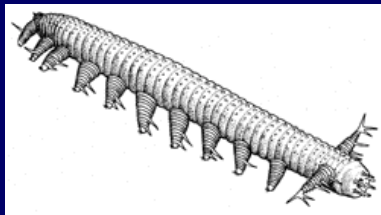
---

---

*Aysheaia pedunculata*

Velvet worm

About 2 inches



---

---

---

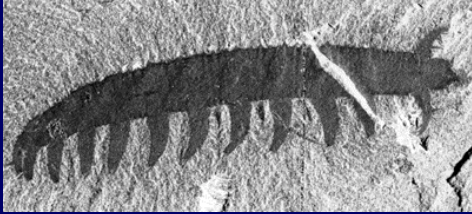
---

---

---

---

Aysheaia fossil



---

---

---

---

---

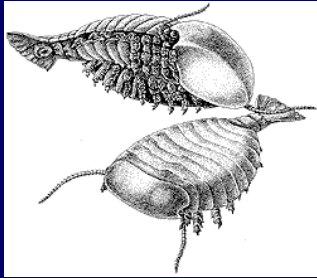
---

---

---

Sidneyia inexpectans

- Relatively large predator
- 2-5 inches long



---

---

---

---

---

---

---

---

Sydneyia fossil



---

---

---

---

---

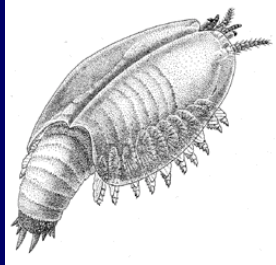
---

---

---

### Canadapsis perfecta

- Crustacean, based head appendages
- Has gill flaps that were also used for swimming



---

---

---

---

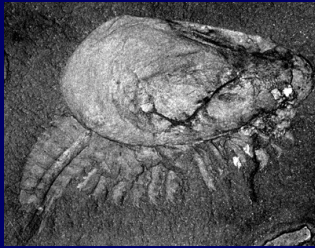
---

---

---

---

### Canadapsis fossil



---

---

---

---

---

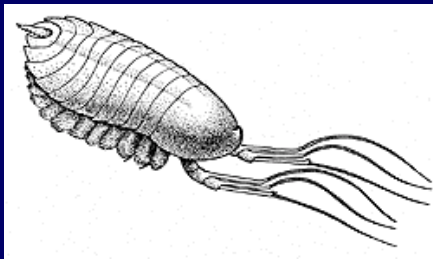
---

---

---

### Leancoilia superlata

- Related to trilobites and chelicerates
- About 2 inches long



---

---

---

---

---

---

---

---

### Leanchoilia fossil

---

---

---

---

---

---

---

---

### Marrella splendens

- Unknown relationships to others
- About 1/10 inch maximum size

---

---

---

---

---

---

---

---

### Olenoides serratus

- Typical trilobite
- Major Cambrian group

---

---

---

---

---

---

---

---

Olenoides fossil

---

---

---

---

---

---

---